

RESOLUTION NO. R2021-55

A RESOLUTION BY THE CITY COUNCIL OF THE CITY OF BURNET, TEXAS, APPROVING THE "FINAL PLAT" OF DELAWARE SPRINGS SUBDIVISION, SECTION 24, A PROPOSED 51-LOT RESIDENTIAL SUBDIVISION CONSISTING OF APPROXIMATELY 25.92 ACRES

Whereas, City Council has approved a preliminary plat of the Delaware Springs Subdivision, Section 24; and

Whereas, the Planning and Zoning Commission has made its recommendation on the final plat of the Delaware Springs Subdivision, Section 24; and

Whereas, the city staff and the city engineer have opined the application substantially complies with the subdivision ordinance; and

NOW, THEREFORE, BE IT RESOLVED BY CITY COUNCIL OF THE CITY OF BURNET, TEXAS, THAT:

Section 1. Findings. The recitals to this Resolution are incorporated herein for all purposes.

Section 2. Approval. The final plat of the Delaware Springs Subdivision, Section 24, is hereby approved.

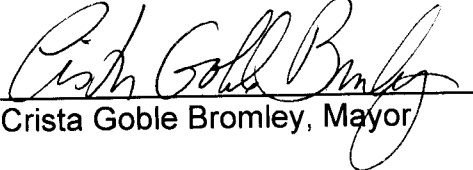
Section 3. Recordation. The final plat of Delaware Springs Subdivision, Section 24 shall not be recorded in the Public Records of Burnet County, Texas, until such time as the public infrastructure contemplated by said plat is completed and preliminarily accepted by City Council.

Section 4. Open Meetings. It is hereby officially found and determined that the meeting at which this resolution was passed was open to the public and that public notice of the time, place and purpose of said meeting was given as required by the Open Meetings Act.

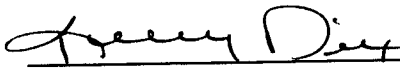
Section 5. Effective Date. This resolution shall take effect immediately upon its passage, and approval as prescribed by law.

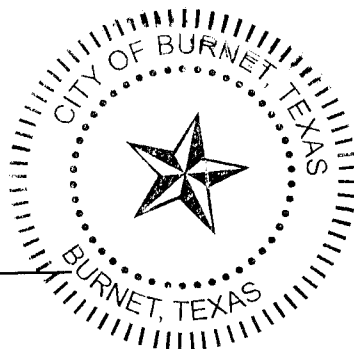
PASSED AND APPROVED this the 26th day of October, 2021.

CITY OF BURNET, TEXAS


Crista Goble Bromley, Mayor

ATTEST:

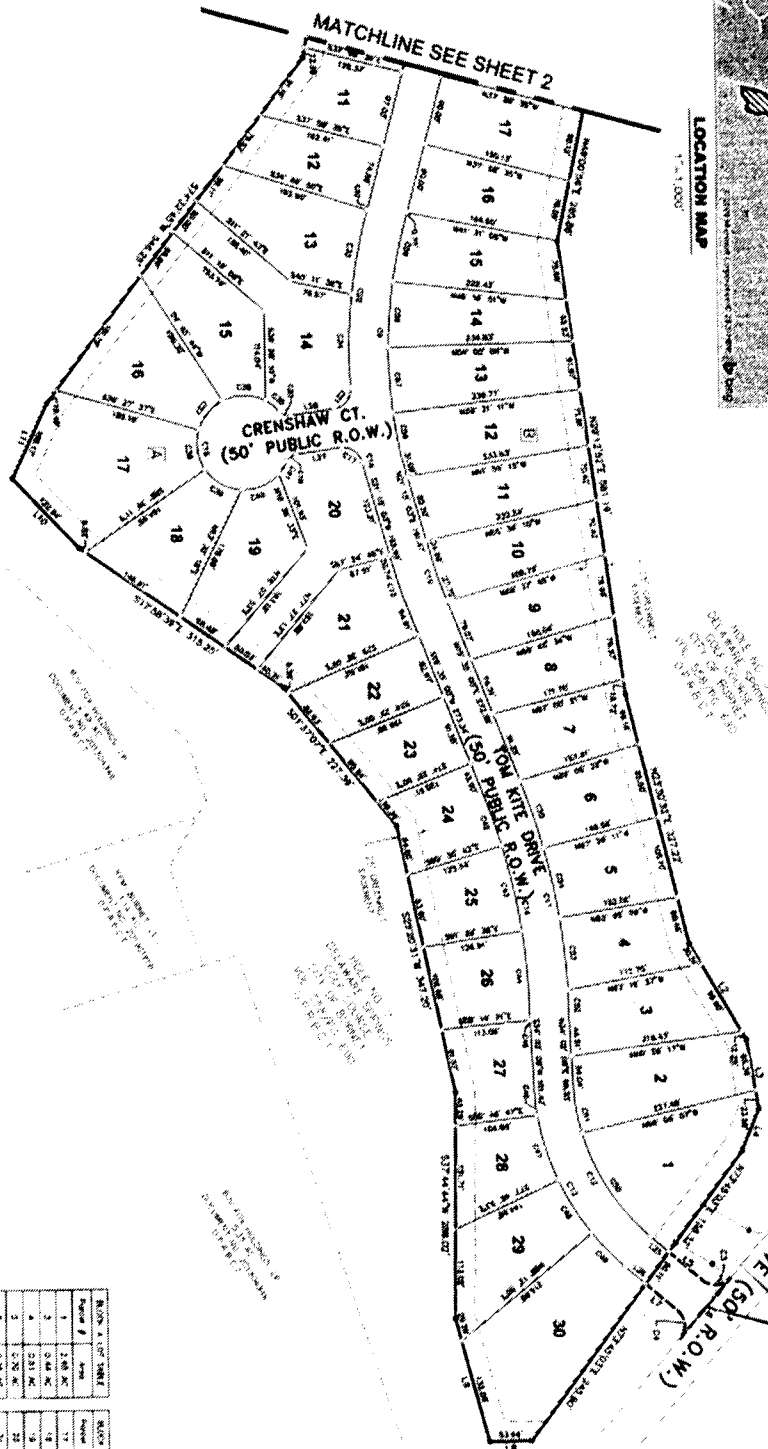
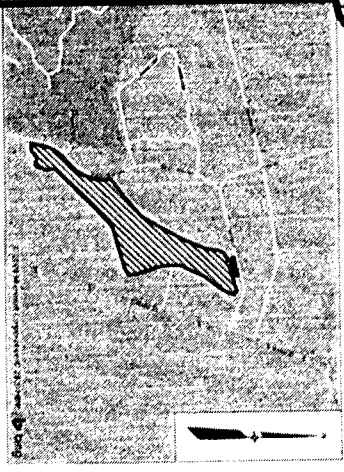

Kelly Dix, City Secretary



FINAL PLAT OF DELAWARE SPRINGS SUBDIVISION SECTION 24

25.95 ACRES

OUT OF THE EUGENIO PEREZ SURVEY, SURVEY NO. 41, ABSTRACT NO. 672,
THE SUSANO HERNANDEZ SURVEY NO. 40, ABSTRACT 398 AND
THE WASHINGTON ANDERSON SURVEY NO. 10, ABSTRACT 29
BURNET COUNTY, TEXAS



STATEMENT OF THE SURVEYOR:
I, the undersigned, being duly sworn, depose and say that I am a duly licensed Surveyor in the State of Texas, and that I am the Surveyor of the above described land, and that the above is a true and correct copy of the original plat as the same appears in my office, and that I have not been furnished with any other information in relation to the same.

NOTICE:
This plat is subject to the provisions of the Act of the Legislature of the State of Texas, approved September 1, 1907, and amended by the Act of the Legislature of the State of Texas, approved September 1, 1909, and the Act of the Legislature of the State of Texas, approved September 1, 1911, and the Act of the Legislature of the State of Texas, approved September 1, 1913, and the Act of the Legislature of the State of Texas, approved September 1, 1915, and the Act of the Legislature of the State of Texas, approved September 1, 1917, and the Act of the Legislature of the State of Texas, approved September 1, 1919, and the Act of the Legislature of the State of Texas, approved September 1, 1921, and the Act of the Legislature of the State of Texas, approved September 1, 1923, and the Act of the Legislature of the State of Texas, approved September 1, 1925, and the Act of the Legislature of the State of Texas, approved September 1, 1927, and the Act of the Legislature of the State of Texas, approved September 1, 1929, and the Act of the Legislature of the State of Texas, approved September 1, 1931, and the Act of the Legislature of the State of Texas, approved September 1, 1933, and the Act of the Legislature of the State of Texas, approved September 1, 1935, and the Act of the Legislature of the State of Texas, approved September 1, 1937, and the Act of the Legislature of the State of Texas, approved September 1, 1939, and the Act of the Legislature of the State of Texas, approved September 1, 1941, and the Act of the Legislature of the State of Texas, approved September 1, 1943, and the Act of the Legislature of the State of Texas, approved September 1, 1945, and the Act of the Legislature of the State of Texas, approved September 1, 1947, and the Act of the Legislature of the State of Texas, approved September 1, 1949, and the Act of the Legislature of the State of Texas, approved September 1, 1951, and the Act of the Legislature of the State of Texas, approved September 1, 1953, and the Act of the Legislature of the State of Texas, approved September 1, 1955, and the Act of the Legislature of the State of Texas, approved September 1, 1957, and the Act of the Legislature of the State of Texas, approved September 1, 1959, and the Act of the Legislature of the State of Texas, approved September 1, 1961, and the Act of the Legislature of the State of Texas, approved September 1, 1963, and the Act of the Legislature of the State of Texas, approved September 1, 1965, and the Act of the Legislature of the State of Texas, approved September 1, 1967, and the Act of the Legislature of the State of Texas, approved September 1, 1969, and the Act of the Legislature of the State of Texas, approved September 1, 1971, and the Act of the Legislature of the State of Texas, approved September 1, 1973, and the Act of the Legislature of the State of Texas, approved September 1, 1975, and the Act of the Legislature of the State of Texas, approved September 1, 1977, and the Act of the Legislature of the State of Texas, approved September 1, 1979, and the Act of the Legislature of the State of Texas, approved September 1, 1981, and the Act of the Legislature of the State of Texas, approved September 1, 1983, and the Act of the Legislature of the State of Texas, approved September 1, 1985, and the Act of the Legislature of the State of Texas, approved September 1, 1987, and the Act of the Legislature of the State of Texas, approved September 1, 1989, and the Act of the Legislature of the State of Texas, approved September 1, 1991, and the Act of the Legislature of the State of Texas, approved September 1, 1993, and the Act of the Legislature of the State of Texas, approved September 1, 1995, and the Act of the Legislature of the State of Texas, approved September 1, 1997, and the Act of the Legislature of the State of Texas, approved September 1, 1999, and the Act of the Legislature of the State of Texas, approved September 1, 2001, and the Act of the Legislature of the State of Texas, approved September 1, 2003, and the Act of the Legislature of the State of Texas, approved September 1, 2005, and the Act of the Legislature of the State of Texas, approved September 1, 2007, and the Act of the Legislature of the State of Texas, approved September 1, 2009, and the Act of the Legislature of the State of Texas, approved September 1, 2011, and the Act of the Legislature of the State of Texas, approved September 1, 2013, and the Act of the Legislature of the State of Texas, approved September 1, 2015, and the Act of the Legislature of the State of Texas, approved September 1, 2017, and the Act of the Legislature of the State of Texas, approved September 1, 2019, and the Act of the Legislature of the State of Texas, approved September 1, 2021, and the Act of the Legislature of the State of Texas, approved September 1, 2023, and the Act of the Legislature of the State of Texas, approved September 1, 2025.

Lot No.	Area (Acres)	Area (Sq. Ft.)
1	0.32	22,000
2	0.32	22,000
3	0.32	22,000
4	0.32	22,000
5	0.32	22,000
6	0.32	22,000
7	0.32	22,000
8	0.32	22,000
9	0.32	22,000
10	0.32	22,000
11	0.32	22,000
12	0.32	22,000
13	0.32	22,000
14	0.32	22,000
15	0.32	22,000
16	0.32	22,000
17	0.32	22,000
18	0.32	22,000
19	0.32	22,000
20	0.32	22,000
21	0.32	22,000
22	0.32	22,000
23	0.32	22,000
24	0.32	22,000
25	0.32	22,000
26	0.32	22,000
27	0.32	22,000
28	0.32	22,000
29	0.32	22,000
30	0.32	22,000

Block	Area (Acres)	Area (Sq. Ft.)
Block 1	1.00	69,000
Block 2	1.00	69,000
Block 3	1.00	69,000
Block 4	1.00	69,000
Block 5	1.00	69,000
Block 6	1.00	69,000
Block 7	1.00	69,000
Block 8	1.00	69,000
Block 9	1.00	69,000
Block 10	1.00	69,000
Block 11	1.00	69,000
Block 12	1.00	69,000
Block 13	1.00	69,000
Block 14	1.00	69,000
Block 15	1.00	69,000
Block 16	1.00	69,000
Block 17	1.00	69,000
Block 18	1.00	69,000
Block 19	1.00	69,000
Block 20	1.00	69,000
Block 21	1.00	69,000
Block 22	1.00	69,000
Block 23	1.00	69,000
Block 24	1.00	69,000
Block 25	1.00	69,000
Block 26	1.00	69,000
Block 27	1.00	69,000
Block 28	1.00	69,000
Block 29	1.00	69,000
Block 30	1.00	69,000

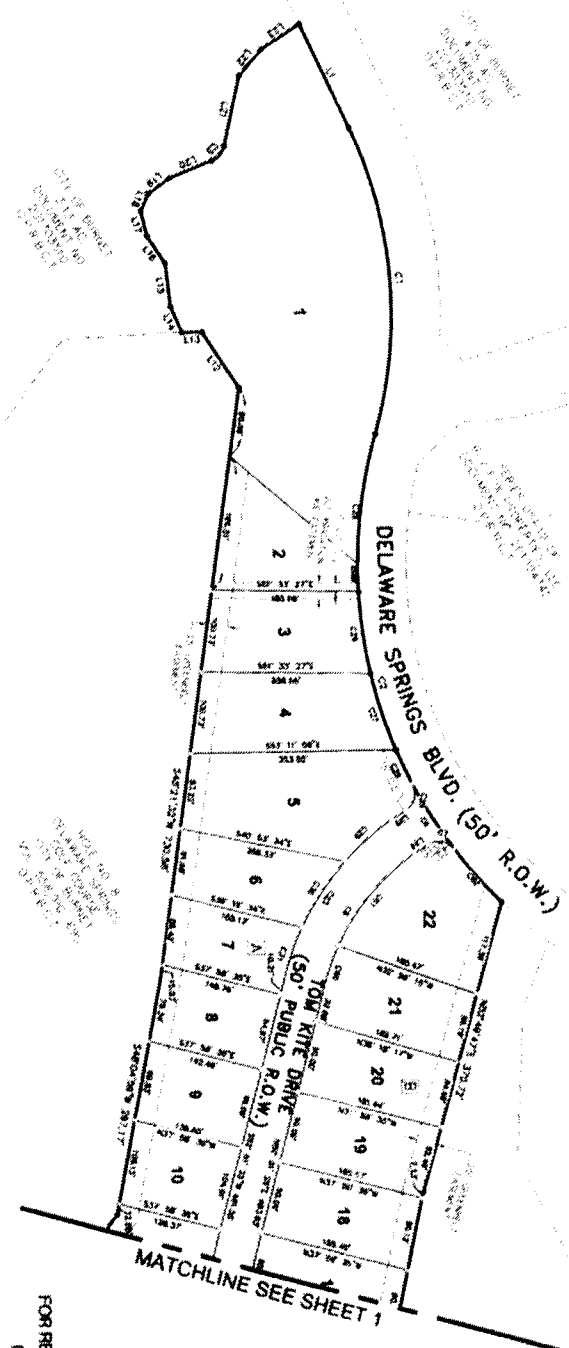
Block	Area (Acres)	Area (Sq. Ft.)
Block 1	0.32	22,000
Block 2	0.32	22,000
Block 3	0.32	22,000
Block 4	0.32	22,000
Block 5	0.32	22,000
Block 6	0.32	22,000
Block 7	0.32	22,000
Block 8	0.32	22,000
Block 9	0.32	22,000
Block 10	0.32	22,000
Block 11	0.32	22,000
Block 12	0.32	22,000
Block 13	0.32	22,000
Block 14	0.32	22,000
Block 15	0.32	22,000
Block 16	0.32	22,000
Block 17	0.32	22,000
Block 18	0.32	22,000
Block 19	0.32	22,000
Block 20	0.32	22,000
Block 21	0.32	22,000
Block 22	0.32	22,000
Block 23	0.32	22,000
Block 24	0.32	22,000
Block 25	0.32	22,000
Block 26	0.32	22,000
Block 27	0.32	22,000
Block 28	0.32	22,000
Block 29	0.32	22,000
Block 30	0.32	22,000

Block	Area (Acres)	Area (Sq. Ft.)
Block 1	0.32	22,000
Block 2	0.32	22,000
Block 3	0.32	22,000
Block 4	0.32	22,000
Block 5	0.32	22,000
Block 6	0.32	22,000
Block 7	0.32	22,000
Block 8	0.32	22,000
Block 9	0.32	22,000
Block 10	0.32	22,000
Block 11	0.32	22,000
Block 12	0.32	22,000
Block 13	0.32	22,000
Block 14	0.32	22,000
Block 15	0.32	22,000
Block 16	0.32	22,000
Block 17	0.32	22,000
Block 18	0.32	22,000
Block 19	0.32	22,000
Block 20	0.32	22,000
Block 21	0.32	22,000
Block 22	0.32	22,000
Block 23	0.32	22,000
Block 24	0.32	22,000
Block 25	0.32	22,000
Block 26	0.32	22,000
Block 27	0.32	22,000
Block 28	0.32	22,000
Block 29	0.32	22,000
Block 30	0.32	22,000

Block	Area (Acres)	Area (Sq. Ft.)
Block 1	0.32	22,000
Block 2	0.32	22,000
Block 3	0.32	22,000
Block 4	0.32	22,000
Block 5	0.32	22,000
Block 6	0.32	22,000
Block 7	0.32	22,000
Block 8	0.32	22,000
Block 9	0.32	22,000
Block 10	0.32	22,000
Block 11	0.32	22,000
Block 12	0.32	22,000
Block 13	0.32	22,000
Block 14	0.32	22,000
Block 15	0.32	22,000
Block 16	0.32	22,000
Block 17	0.32	22,000
Block 18	0.32	22,000
Block 19	0.32	22,000
Block 20	0.32	22,000
Block 21	0.32	22,000
Block 22	0.32	22,000
Block 23	0.32	22,000
Block 24	0.32	22,000
Block 25	0.32	22,000
Block 26	0.32	22,000
Block 27	0.32	22,000
Block 28	0.32	22,000
Block 29	0.32	22,000
Block 30	0.32	22,000

FOR REVIEW ONLY
DATE: 8-6-21

FINAL PLAT OF
DELAWARE SPRINGS SUBDIVISION
SECTION 24
 25.95 ACRES
 OUT OF THE EUGENIO PEREZ PEREZ SURVEY, SURVEY NO. 41, ABSTRACT NO. 672,
 THE SUSANO HERNANDEZ SURVEY NO. 40, ABSTRACT 398 AND
 THE WASHINGTON ANDERSON SURVEY NO. 10, ABSTRACT 29
 BURNET COUNTY, TEXAS



FOR REVIEW ONLY
 DATE: 8-6-21

NO. OF LOTS	AREA	PERCENTAGE
1	1.12	4.32
2	0.45	1.74
3	0.45	1.74
4	0.45	1.74
5	0.45	1.74
6	0.45	1.74
7	0.45	1.74
8	0.45	1.74
9	0.45	1.74
10	0.45	1.74
11	0.45	1.74
12	0.45	1.74
13	0.45	1.74
14	0.45	1.74
15	0.45	1.74
16	0.45	1.74
17	0.45	1.74
18	0.45	1.74
19	0.45	1.74
20	0.45	1.74
21	0.45	1.74
22	0.45	1.74
TOTAL	25.95	100.00

LOT NO.	AREA	PERCENTAGE	OWNER	ACRES	PERCENTAGE	OWNER	ACRES	PERCENTAGE	OWNER	ACRES	PERCENTAGE
1	1.12	4.32	...	1.12	4.32	...	1.12	4.32	...	1.12	4.32
2	0.45	1.74	...	0.45	1.74	...	0.45	1.74	...	0.45	1.74
3	0.45	1.74	...	0.45	1.74	...	0.45	1.74	...	0.45	1.74
4	0.45	1.74	...	0.45	1.74	...	0.45	1.74	...	0.45	1.74
5	0.45	1.74	...	0.45	1.74	...	0.45	1.74	...	0.45	1.74
6	0.45	1.74	...	0.45	1.74	...	0.45	1.74	...	0.45	1.74
7	0.45	1.74	...	0.45	1.74	...	0.45	1.74	...	0.45	1.74
8	0.45	1.74	...	0.45	1.74	...	0.45	1.74	...	0.45	1.74
9	0.45	1.74	...	0.45	1.74	...	0.45	1.74	...	0.45	1.74
10	0.45	1.74	...	0.45	1.74	...	0.45	1.74	...	0.45	1.74
11	0.45	1.74	...	0.45	1.74	...	0.45	1.74	...	0.45	1.74
12	0.45	1.74	...	0.45	1.74	...	0.45	1.74	...	0.45	1.74
13	0.45	1.74	...	0.45	1.74	...	0.45	1.74	...	0.45	1.74
14	0.45	1.74	...	0.45	1.74	...	0.45	1.74	...	0.45	1.74
15	0.45	1.74	...	0.45	1.74	...	0.45	1.74	...	0.45	1.74
16	0.45	1.74	...	0.45	1.74	...	0.45	1.74	...	0.45	1.74
17	0.45	1.74	...	0.45	1.74	...	0.45	1.74	...	0.45	1.74
18	0.45	1.74	...	0.45	1.74	...	0.45	1.74	...	0.45	1.74
19	0.45	1.74	...	0.45	1.74	...	0.45	1.74	...	0.45	1.74
20	0.45	1.74	...	0.45	1.74	...	0.45	1.74	...	0.45	1.74
21	0.45	1.74	...	0.45	1.74	...	0.45	1.74	...	0.45	1.74
22	0.45	1.74	...	0.45	1.74	...	0.45	1.74	...	0.45	1.74
TOTAL	25.95	100.00		25.95	100.00		25.95	100.00		25.95	100.00

**FINAL PLAT OF
DELAWARE SPRINGS SUBDIVISION
SECTION 24
25.95 ACRES
OUT OF THE EUGENIO PEREZ SURVEY, SURVEY NO. 41, ABSTRACT NO. 672,
THE SUSANO HERNANDEZ SURVEY NO. 40, ABSTRACT 398 AND
THE WASHINGTON ANDERSON SURVEY NO. 10, ABSTRACT 29
BURNET COUNTY, TEXAS**

THIS PLAT OF THE DELAWARE SPRINGS SUBDIVISION, SECTION 24, TOWNSHIP 10S, RANGE 12E, BURNET COUNTY, TEXAS, WAS PREPARED BY THE SURVEYOR AND THE ENGINEER IN CHARGE OF THE SURVEY, AND IS HEREBY CERTIFIED TO BE A TRUE AND CORRECT REPRESENTATION OF THE SURVEY AND THE INTENT THEREOF.

THE SURVEY WAS MADE BY THE SURVEYOR AND THE ENGINEER IN CHARGE OF THE SURVEY, AND IS HEREBY CERTIFIED TO BE A TRUE AND CORRECT REPRESENTATION OF THE SURVEY AND THE INTENT THEREOF.

THE SURVEY WAS MADE BY THE SURVEYOR AND THE ENGINEER IN CHARGE OF THE SURVEY, AND IS HEREBY CERTIFIED TO BE A TRUE AND CORRECT REPRESENTATION OF THE SURVEY AND THE INTENT THEREOF.

THE SURVEY WAS MADE BY THE SURVEYOR AND THE ENGINEER IN CHARGE OF THE SURVEY, AND IS HEREBY CERTIFIED TO BE A TRUE AND CORRECT REPRESENTATION OF THE SURVEY AND THE INTENT THEREOF.

THE SURVEY WAS MADE BY THE SURVEYOR AND THE ENGINEER IN CHARGE OF THE SURVEY, AND IS HEREBY CERTIFIED TO BE A TRUE AND CORRECT REPRESENTATION OF THE SURVEY AND THE INTENT THEREOF.

THE SURVEY WAS MADE BY THE SURVEYOR AND THE ENGINEER IN CHARGE OF THE SURVEY, AND IS HEREBY CERTIFIED TO BE A TRUE AND CORRECT REPRESENTATION OF THE SURVEY AND THE INTENT THEREOF.

THE SURVEY WAS MADE BY THE SURVEYOR AND THE ENGINEER IN CHARGE OF THE SURVEY, AND IS HEREBY CERTIFIED TO BE A TRUE AND CORRECT REPRESENTATION OF THE SURVEY AND THE INTENT THEREOF.

THE SURVEY WAS MADE BY THE SURVEYOR AND THE ENGINEER IN CHARGE OF THE SURVEY, AND IS HEREBY CERTIFIED TO BE A TRUE AND CORRECT REPRESENTATION OF THE SURVEY AND THE INTENT THEREOF.

THE SURVEY WAS MADE BY THE SURVEYOR AND THE ENGINEER IN CHARGE OF THE SURVEY, AND IS HEREBY CERTIFIED TO BE A TRUE AND CORRECT REPRESENTATION OF THE SURVEY AND THE INTENT THEREOF.

THE SURVEY WAS MADE BY THE SURVEYOR AND THE ENGINEER IN CHARGE OF THE SURVEY, AND IS HEREBY CERTIFIED TO BE A TRUE AND CORRECT REPRESENTATION OF THE SURVEY AND THE INTENT THEREOF.

THE SURVEY WAS MADE BY THE SURVEYOR AND THE ENGINEER IN CHARGE OF THE SURVEY, AND IS HEREBY CERTIFIED TO BE A TRUE AND CORRECT REPRESENTATION OF THE SURVEY AND THE INTENT THEREOF.

THE SURVEY WAS MADE BY THE SURVEYOR AND THE ENGINEER IN CHARGE OF THE SURVEY, AND IS HEREBY CERTIFIED TO BE A TRUE AND CORRECT REPRESENTATION OF THE SURVEY AND THE INTENT THEREOF.